

South Gloucestershire Landscape Character Assessment

Annex I: Visually Important Hillside

South Gloucestershire Council

Final Draft Report for Adoption Chapter 14

Prepared by LUC

September 2024



Version	Status	Prepared	Checked	Approved	Date
1	Draft Method and Pilot	E White	K Davies	K Davies	24.02.2023
2	Draft Report	J Ashton Davies E White	E White	K Davies	28.04.2023
3	Draft Report	E White	E White	K Davies	05.07.2023
4	Final Draft	E White	E White	K Davies	01.11.2023
5	Final Draft (updated following New Local Plan Phase 3 consultation)	E White	E White	K Davies	20.06.2024
6	Final Draft Report for Adoption	E White	E White	K Davies	11.09.2024



Land Use Consultants Limited

Registered in England. Registered number 2549296. Registered office: 250 Waterloo Road, London SE1 8RD. Printed on 100% recycled paper

Contents

Chapter 14	97
River Frome - steeper valley sides	
Characteristics	101
Summary	102
References	103

Chapter 14

River Frome - steeper valley sides

The River Frome VIH comprises the steep western and eastern valley sides to the River Frome. It is located on the southern edge of the South Gloucestershire boundary and is located within the Frome Valley (LCA 13) landscape character area. The VIH contributes towards the setting of the river which is confined by the steep wooded valley sides, and is associated with views towards and from Frenchay Conservation Area.

Figure 14.1: Location of the River Frome Visually Important Hillside and landscape character context

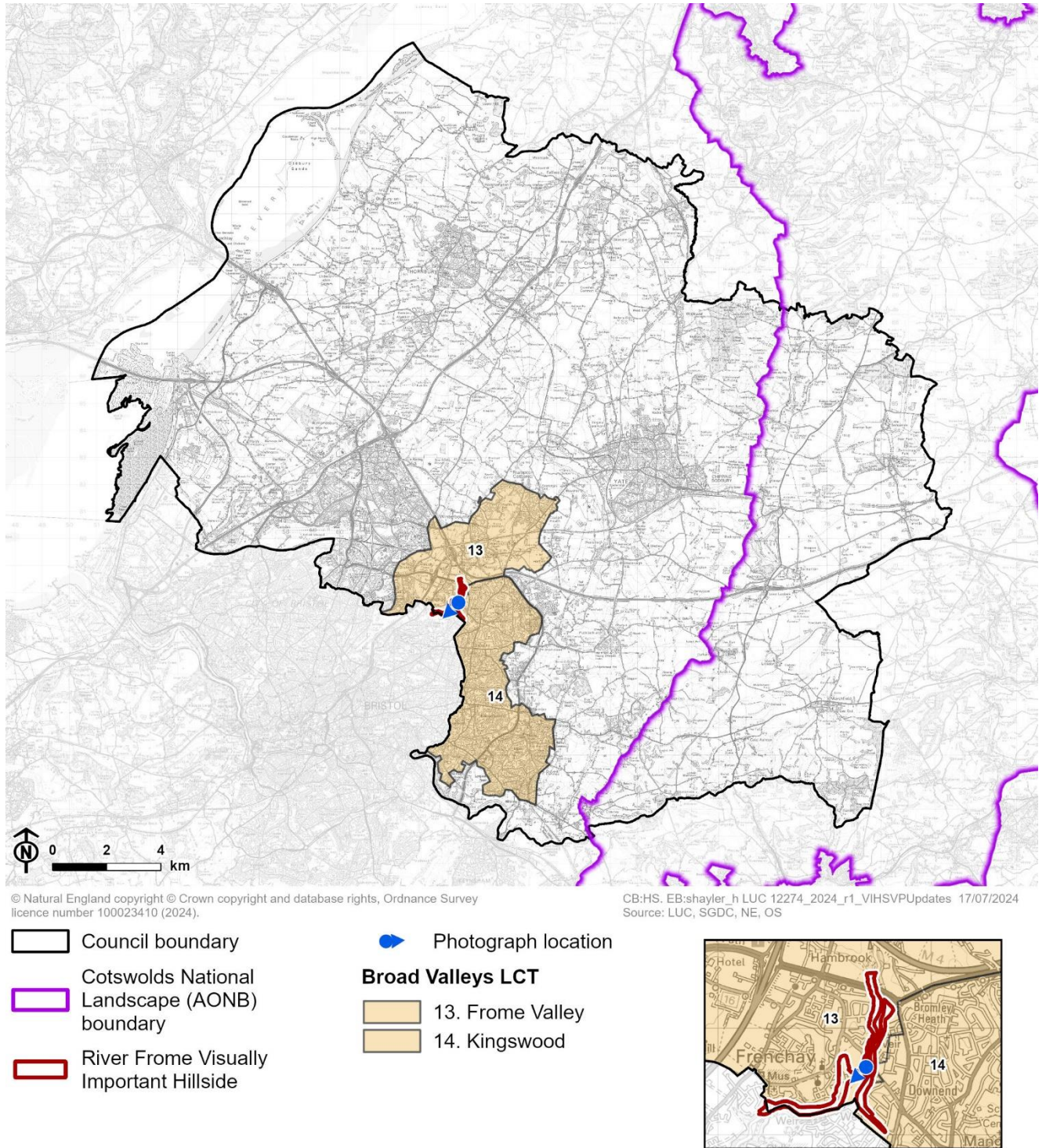


Figure 14.2: Detailed map of the River Frome Visually Important Hillside

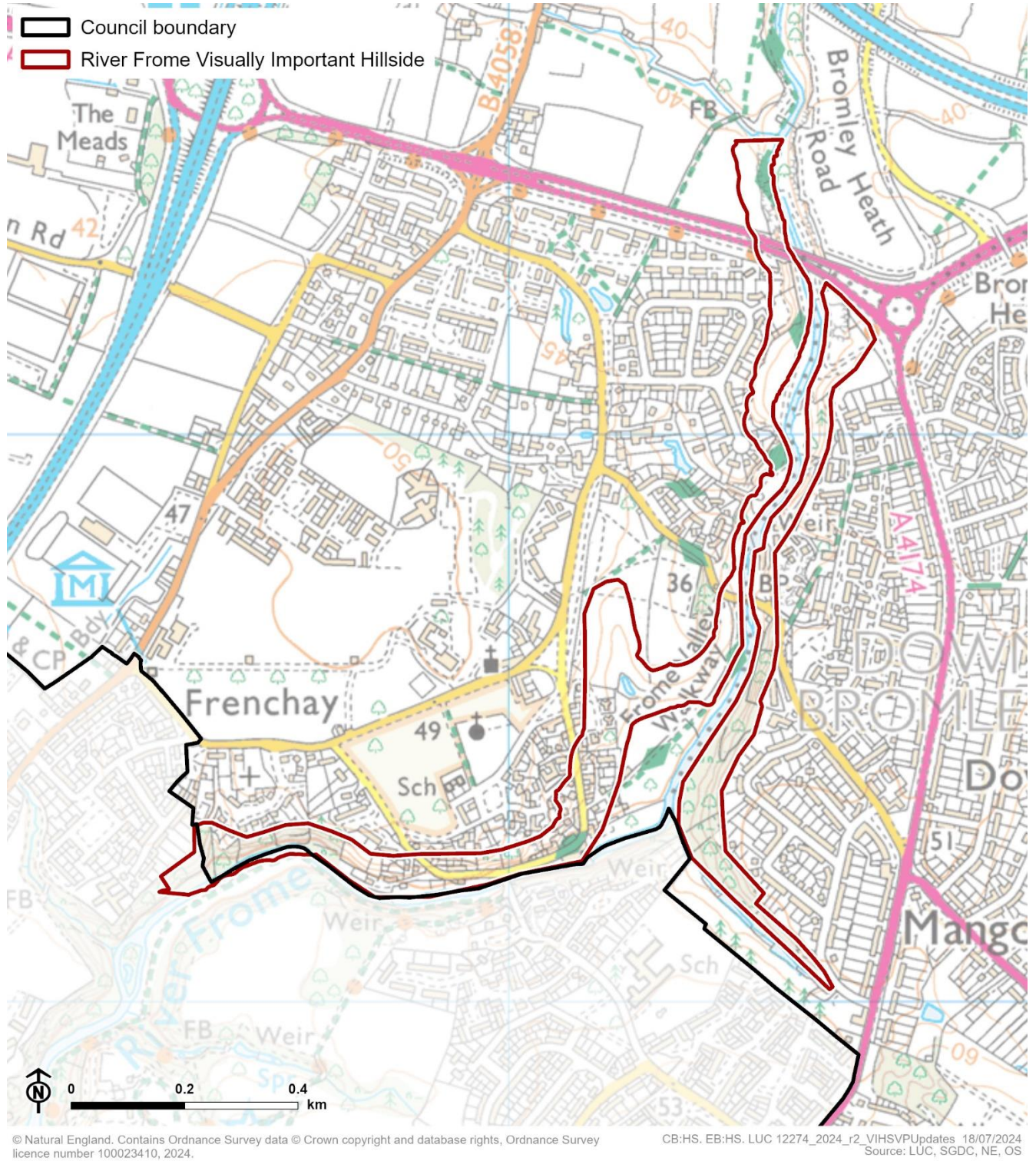


Figure 14.3: View of the River Frome steeper valley sides from the Frome Valley Walkway



Characteristics

Distinctiveness and identity

- The River Frome VIH is readily identifiable as a natural landform feature on OS mapping as the steep sides of the valley are identified with close contour lines along the River Frome, forming a 'v' shaped valley.
- The VIH is a distinctive feature with a clear sense of identity as noted in the following publications:
 - LCA 13: Frome Valley description in South Gloucestershire Landscape Character Assessment SPD notes that *“the river again passes through a small, incised valley and gorge through Frenchay, before flowing south-west, beyond this LCA.”*
 - The Frenchay Conservation Area document [See reference 1] states that *“the river has a dramatic setting with its mainly enclosed character confined by the steep wooded valley sides”*.

Visual prominence

- Due to the incised and wooded nature of the valley, views along the VIH are limited to areas of higher elevation. The Frenchay Conservation Area document mentions that *“Frenchay Bridge and Cleevewood Bridge located high above the river enable good views along the river valley.”*
- The VIH is visible from limited public vantage points including from along the Frome Valley Walkway which runs along the edge of the River Frome.

Character and value

- A key characteristic of the LCA 13: Frome Valley is the “*linear woodland associated with the gorges near Bury Hill and Frenchay and elsewhere along steep riverbanks.*”
- The VIH forms part of the Frenchay Conservation Area and contributes to its setting as previously noted.
- The character and appearance of the VIH is largely unspoilt by visual detractors, limited to houses located along the top of the valley sides that overlook the River Frome.

Summary

The steep sloping valley sides of the River Frome is categorised as a VIH as it meets most of the criteria to some extent. It is readily identifiable as a natural landform feature on OS mapping; a distinctive feature with a strong sense of identity; has some prominence in local views; contributes to the setting of a Conservation Area; and its character and appearance is largely unspoilt by visual detractors.

References

- 1 Frenchay Conservation Area SPD (2007). Available at:
<https://beta.southglos.gov.uk/wp-content/uploads/Frenchay-Conservation-Area-SPD-March-2007.pdf>

Report produced by LUC

Report produced by LUC

Bristol

12th Floor, Beacon Tower, Colston Street, Bristol BS1 4XE
0117 929 1997
bristol@landuse.co.uk

Cardiff

16A, 15th Floor, Brunel House, 2 Fitzalan Rd, Cardiff CF24 0EB
0292 032 9006
cardiff@landuse.co.uk

Edinburgh

Atholl Exchange, 6 Canning Street, Edinburgh EH3 8EG
0131 202 1616
edinburgh@landuse.co.uk

Glasgow

37 Otago Street, Glasgow G12 8JJ
0141 334 9595
glasgow@landuse.co.uk

London

250 Waterloo Road, London SE1 8RD
020 7383 5784
london@landuse.co.uk

Manchester

6th Floor, 55 King Street, Manchester M2 4LQ
0161 537 5960
manchester@landuse.co.uk

Sheffield

32 Eyre Street, Sheffield, S1 4QZ
0114 392 2366
sheffield@landuse.co.uk

landuse.co.uk

Landscape Design / Strategic Planning & Assessment / Transport Planning
Development Planning / Urban Design & Masterplanning / Arboriculture
Environmental Impact Assessment / Landscape Planning & Assessment
Landscape Management / Ecology / Historic Environment / GIS & Visualisation